



ISO 21001 – 2018  
APPROVED



# BRAHMAPUTRA INSTITUTE OF MANAGEMENT

Empowering Youth ● Enhancing Dignity ● Ensuring Employment

**Academic and Knowledge Partner with**



NIILM UNIVERSITY  
AND  
ST. XAVIER COLLEGE



Well qualified and experienced faculties

Strategic academic planning by Mentors

Personalized doubt clearing sessions

Frequent Mock Tests

Scan the QR Code  
to visit website



## CONTACT INFORMATION



Peace Enclave, Ulubari,  
Guwahati-781007, Assam



info@bimedu.in



www.bimedu.in



+91 76700 70015





# From the Desk of CEO


Welcome to Brahmaputra Institute of Management (BIM), where education meets purpose and ambition finds direction. At BIM, we believe every student has the potential to lead and make a meaningful impact. Through quality education, practical training, industry exposure, and personality development, we prepare students for real-world challenges. Located in the heart of Guwahati, BIM offers a diverse and enriching learning environment guided by experienced faculty and strong industry connections. Our goal is to develop academically strong, professionally capable, and socially responsible leaders for the future.

*CEO, Brahmaputra Institute of Management (BIM)*



OUR  
VISION

Our vision is to become a centre of excellence for academic depth, ethical leadership and practical training and develop socially responsible leaders equipped with modern skills, global perspectives, and the ability to contribute sustainably to society.



OUR  
MISSION

To Nurture  
ethical values,  
leadership qualities,  
and holistic personal  
development.

To Promote  
innovation, inclusivity,  
and strong industry  
partnerships for career  
readiness and  
societal impact.

To Prepare  
skilled, responsible  
professionals ready  
to meet global  
challenges.



Scan the QR Code  
to visit website





# BIM WHO WHY

## WHO IS BIM?



- **Brahmaputra Institute of Management (BIM)** is a professionally driven management institute committed to providing quality, industry-oriented education / training.
- BIM offers one-year diploma programmes designed to develop managerial competence, practical skills, ethical values, and leadership qualities required for success in today's dynamic business environment.

## WHY CHOOSE BIM?

- **Prime Location:** Being located at the Gateway of Northeast provides excellent access to major commercial areas, hotels, industries, and public transportation.
- **Experienced Faculty:** The educators comprise seasoned industry practitioners and accomplished academic professionals, committed to the holistic development and success of students.
- **Modern Curriculum:** The curriculum is regularly revised to meet international standards and evolving job-market requirements.
- **Industry Integration:** Students gain first-hand exposure through internships, industrial visits, workshops, and real-world case studies.
- **Reasonable Fee Structure:** Reasonable fee structure designed to ensure quality education remains accessible without compromising academic excellence. BIM extends upto 10% scholarship to students who meet the prescribed eligibility criteria.
- **Education Loan:** BIM offers educational loan facilities.
- **Placement:** The institute offers 100% placement assistance.



Scan the QR Code  
to visit website







## OUR COURSES

BIM offers a range of professional programs designed to equip students with the knowledge, skills, competencies and personality required to excel in the dynamic fields of management and business.

### ONE YEAR DIPLOMA COURSES:

- ☐ Diploma in Hotel Management
- ☐ Diploma in Retail Management
- ☐ Diploma in Aviation Management
- ☐ Diploma in Event Management

## ADMISSION GUIDELINES

### ELIGIBILITY

Candidates seeking admission must have successfully cleared the HSLC examination. Students who have completed Higher Secondary (HS) or are graduates are also eligible and are encouraged to apply.

### APPLICATION PROCESS

- ☐ Application forms and Prospectus will be obtained from the institute office on payment of Rs. 500/-.
- ☐ A candidate may also apply ONLINE at [www.bimedu.in](http://www.bimedu.in) by downloading the prospectus and filling up the online application form.

### IMPORTANT DATES (Tentative)

- |   |   |                 |
|---|---|-----------------|
| 1. Start of Application Process/Sale of Application Forms | - | Starts FEB 2026 |
| 2. Group Discussions/Personal Interview                   | - | Starts APR 2026 |
| 3. Institute Orientation                                  | - | JUN 2026        |
| 4. Start of 2026-2027 Session                             | - | August 2026     |



Scan the QR Code  
to visit website









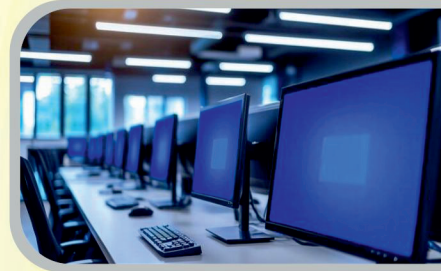
# SALIENT FEATURES OF THE PROGRAMME

Scan the QR Code  
to visit website



**Educational Environment:** BIM's highly committed and dedicated full-time faculty adopt effective teaching-learning methodologies that foster critical and independent thinking, enabling students to develop a well-rounded outlook, strong subject expertise, modern skill sets, and positive professional attitudes.

**Computer Education:** BIM ensures compulsory computer education for all students to enhance digital literacy and technical competence. This equips learners with essential computing skills required for academic excellence and professional effectiveness in a technology-driven environment.



**Case study with real life application:** BIM emphasizes the extensive use of case studies and real-world examples in teaching to bridge the gap between theory and practice to enhance problem-solving abilities and practical decision-making skills among students.

**Continuous Evaluation:** BIM follows a continuous evaluation system that assesses students through various academic components. Regular and constructive feedback helps students identify strengths, address gaps, and improve overall learning outcomes.



**Industry Interaction:** BIM facilitates regular interaction with industry through industrial visits, guest lectures, and similar professional engagements. These interactions expose students to current industry practices, enhance practical understanding, and strengthen career readiness.

**Summer Internship:** The summer internship provides students with exposure to the complexities of the business environment and enables them to integrate theoretical knowledge acquired in the classroom with practical applications in real organizational settings.








# OUR

# FACILITIES

Scan the QR Code


to visit website




**Location:** BIM enjoys a prime location in the heart of the city, offering excellent accessibility and convenience. The campus provides adequate parking facilities and easy connectivity, ensuring a hassle-free environment for students, faculty, and visitors.




**Lecture Hall, Conference Hall & Podcast Room:** BIM is supported by spacious and well-planned smart classrooms equipped with modern teaching aids, along with a digitally enabled conference hall and podcast room designed to facilitate academic interactions, seminars, and professional engagements.



**Library:** BIM's library offers a comprehensive collection of books, journals, and reports, including the latest resources in management, business, and information technology.



**Lab and Internet Facilities:** The institute maintains a well-equipped computer laboratory with internet access. A computerized communication laboratory has been established to offer specialized training in organizational behavior, communication skills, individual and group behavior, presentation skills, and interview preparation, thereby enhancing students' overall professional competence.



**Cafeteria:** BIM is equipped with a well-maintained cafeteria that provides economical, hygienic, and nutritious food, catering to the daily dietary requirements of students.



**Mock-up Room:** BIM provides a well-equipped mock-up room designed to support a wide range of extracurricular pursuits, including cultural, recreational, and creative activities. The space encourages students to engage in group projects, hobby clubs, wellness activities, fostering teamwork, leadership, and overall personality development alongside academic learning.





# CAREER OPPORTUNITIES

Scan the QR Code  
to visit website



## PLACEMENT OVERVIEW

- The institute offers exclusive career pathways across leading corporates, multinational companies, retail, healthcare, hospitality, aviation, government institutions and service industries.
- A refined and future-focused placement ecosystem is dedicated to developing industry-ready professionals with specialization in Marketing, Finance and Human Resources.



Your ambition

Our guidance

A rewarding tomorrow

**Admissions Open for  
Session 2026–27**

*Take the first step towards  
a successful management career*

**WITH**



**BRAHMAPUTRA INSTITUTE OF MANAGEMENT**

Empowering Youth ● Enhancing Dignity ● Ensuring Employment

Scan the QR Code  
to visit website



**100%** Placement  
Assistance